



MONTHLY MEMBERSHIP PROGRESS REPORT

District 35 I

Results as of: 11/30/2015

GMT: HARVEY WHITLEY

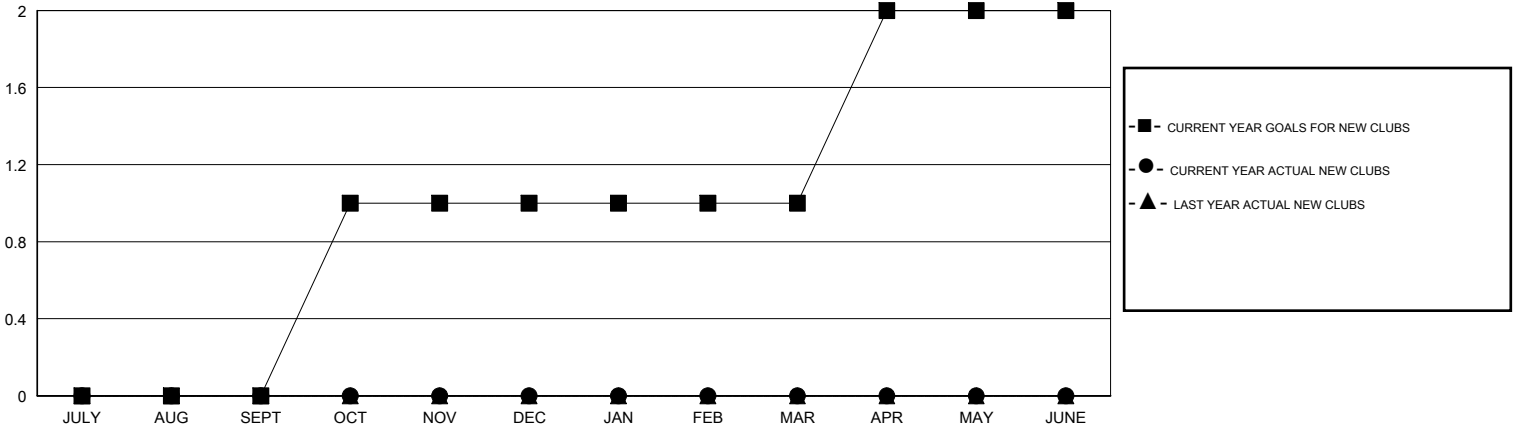
LOCATION FLORIDA

GMT CA 1

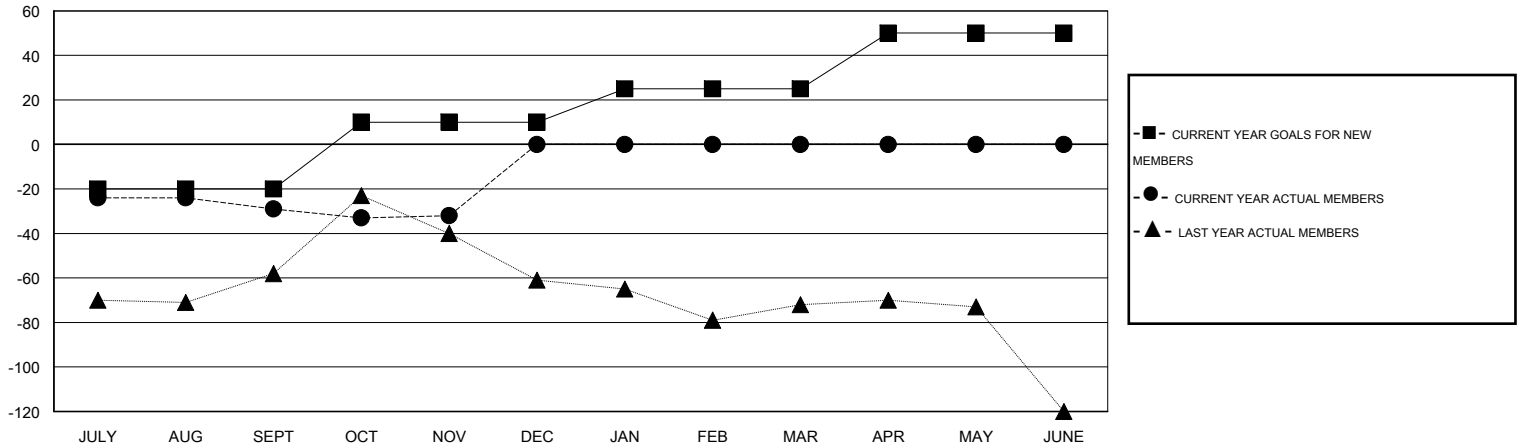
Clubs				
RESULTS FOR 2015-2016				
QUARTER	NEW CLUB GOAL	NEW CLUBS	DROPPED CLUBS	NET GAIN/LOSS
JULY/AUG/SEPT	0	0	0	0
OCT/NOV/DEC	1	0	0	0
JAN/FEB/MAR	0	0	0	0
APR/MAY/JUNE	1	0	0	0

Members				
RESULTS FOR 2015-2016				
QUARTER	NEW MEMBER GOAL	CHARTER AND NEW MEMBERS ADDED	DROPPED MEMBERS	NET GAIN/LOSS
JULY/AUG/SEPT	-20	26	55	-29
OCT/NOV/DEC	30	24	27	-3
JAN/FEB/MAR	15	0	0	0
APR/MAY/JUNE	25	0	0	0

GOALS AND ACTUAL NEW CLUBS CUMULATIVE



GOALS AND ACTUAL MEMBERS CUMULATIVE



DROPPED CLUBS: 0	26 CLUBS OF 49 ADDED 1 OR MORE NEW MEMBERS	GENDER DISTRIBUTION MALE 714 (55.35%) FEMALE 576 (44.65%)
DROPPED MEMBERS DECEASED 6 CLUB CANCELLED 0 OTHER 76 TOTAL 82	CLICK HERE FOR HEALTH ASSESSMENT DATA	FAMILY UNIT MEMBERS 356 HEAD OF HOUSEHOLD 175 NON-HEAD OF HOUSEHOLD 181